

# Fishers Arts & Municipal Complex

DESIGN UPDATE

April 18, 2022

ART CENTER

ARTS AND MUNICIPAL COMPLEX  
CITY OF FISHERS

**DELV**  
DESIGN



 **browning day**

 **A&F ENGINEERING**

**KIRKEGAARD**

Fink Roberts & Petrie, Inc.  
**FRP**  
Structural Engineers

**kbsd**  
CONSULTING





# A Vibrant Context



FISHERS ARTS AND MUNICIPAL COMPLEX



# A Vibrant Context



FISHERS ARTS AND MUNICIPAL COMPLEX



# The Nickel Plate District

## A Statewide Cultural District

The **Nickel Plate District**, a designated Statewide Cultural District, includes a state of the art amphitheater, The Depot, and a trail. The Depot at Nickel Plate features luxury apartments as well as dining and shopping. The Switch, currently under construction, will bring more apartments, additional retail space, new office space, a parking garage and a town square plaza connecting the train station. The Nickel Plate Trail, located on the Nickel Plate Line, honors the history of the area by incorporating a railroad track stamp on the asphalt, making it both a practical and visually appealing addition to downtown Fishers.

### Impact Points

1,496

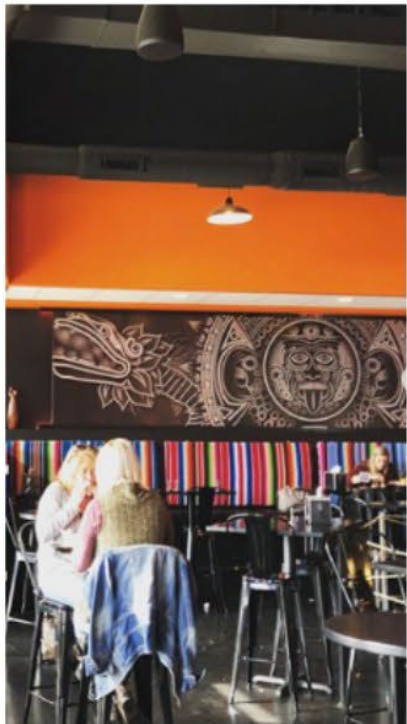
Creative jobs in the zip codes surrounding the Nickel Plate District in 2019. ([Source](#))

\$77.7M

Creative industry earnings in the zip codes surrounding the Nickel Plate District in 2019. ([Source](#))

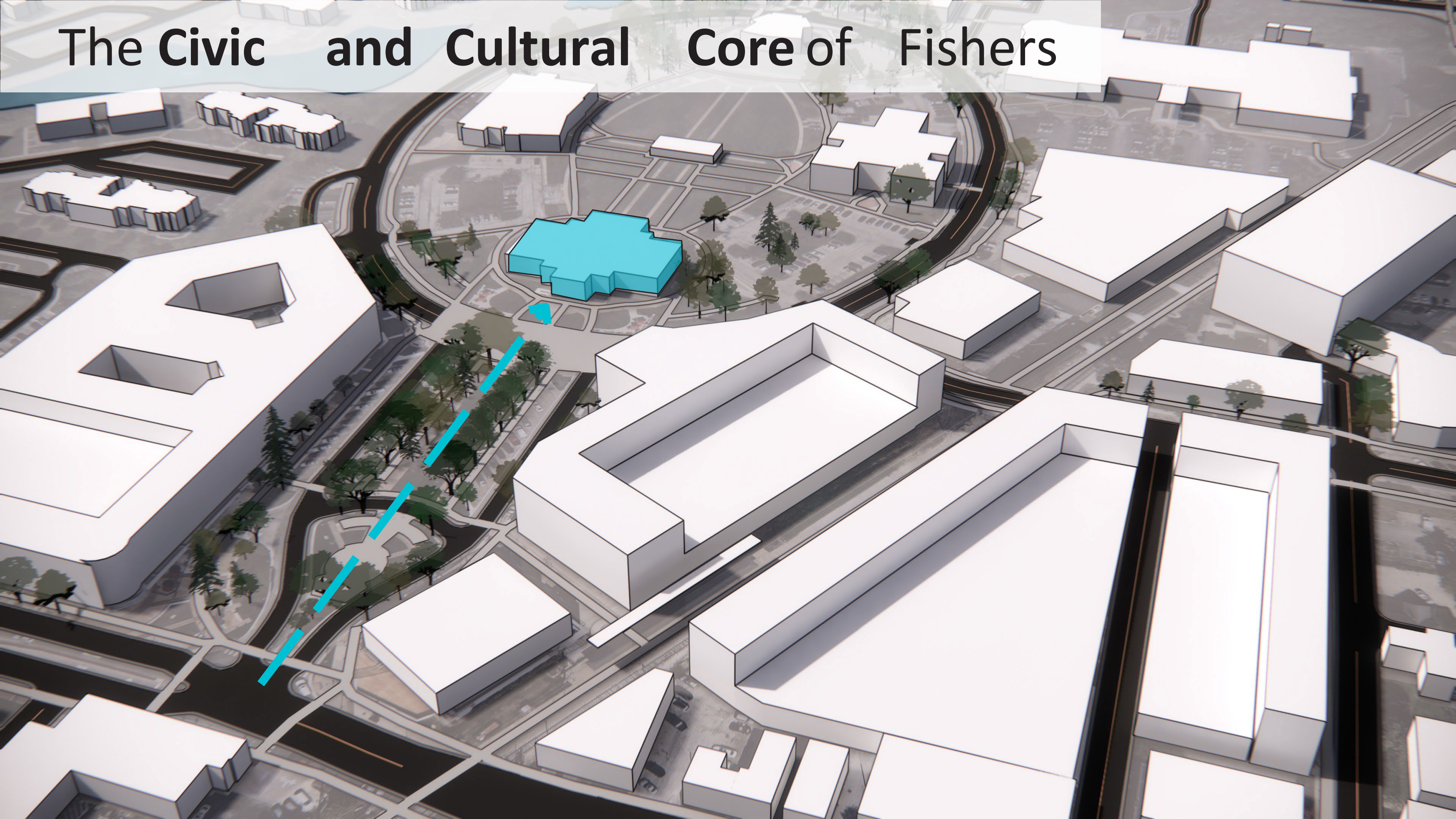
\$14.9M

Cultural nonprofit revenues in the zip codes surrounding the Nickel Plate District in 2019. ([Source](#))



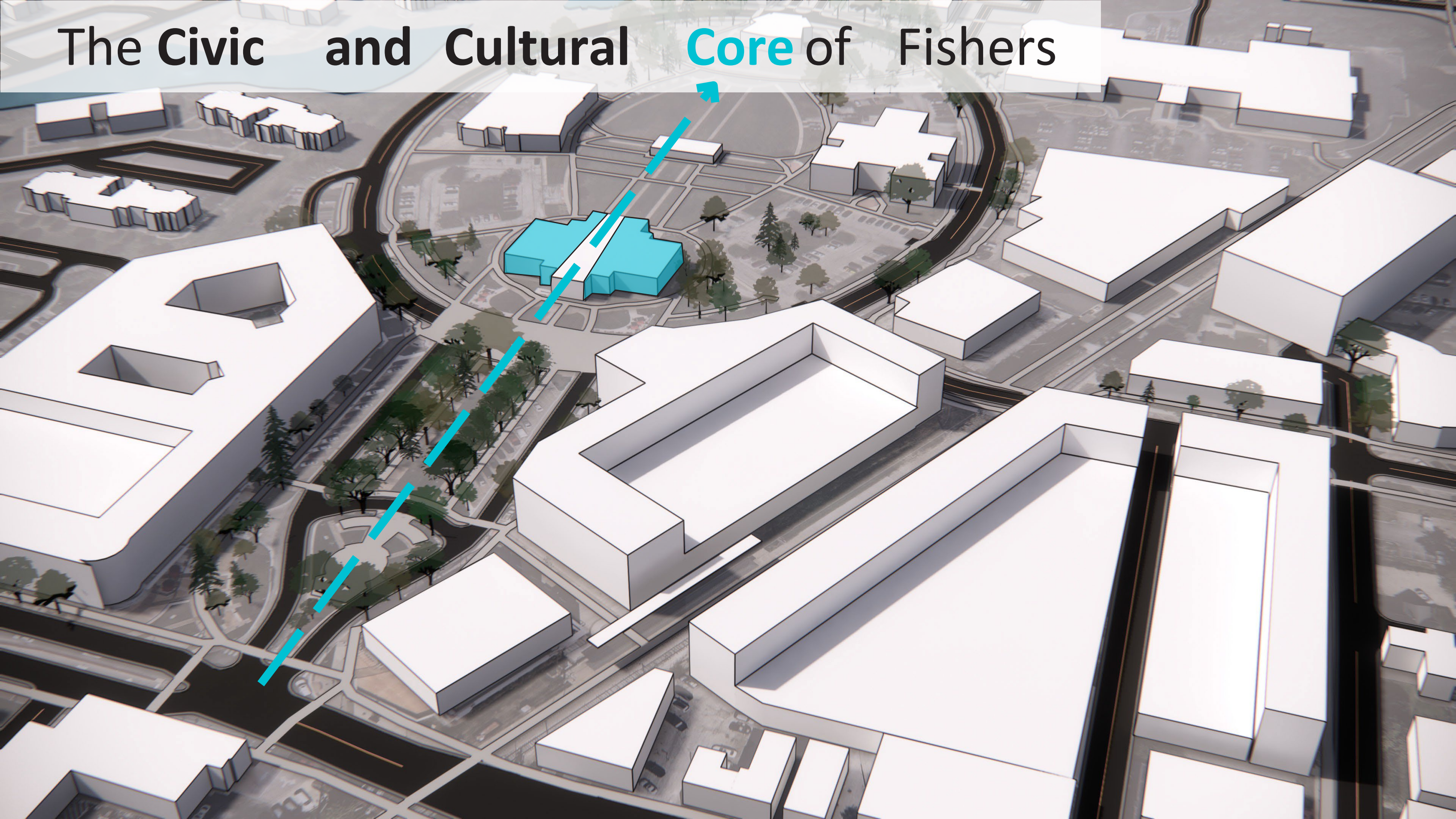


# The Civic and Cultural Core of Fishers





# The Civic and Cultural Core of Fishers





Provide a functional and beautiful community  
beacon that becomes a **Building for the People**



FISHERS ARTS AND MUNICIPAL COMPLEX

## Project Vision + Pillars

DESIGN UPDATE



# Provide a functional and beautiful community beacon that becomes a **Building for the People**

- **Elevates the Arts**
- **Timeless** aesthetic that **invokes civic pride** and looks to the future of **Fishers**
- **Open and Inviting** that expands and **activates** the site
- **Leads by example** in regards to Sustainability

FISHERS ARTS AND MUNICIPAL COMPLEX

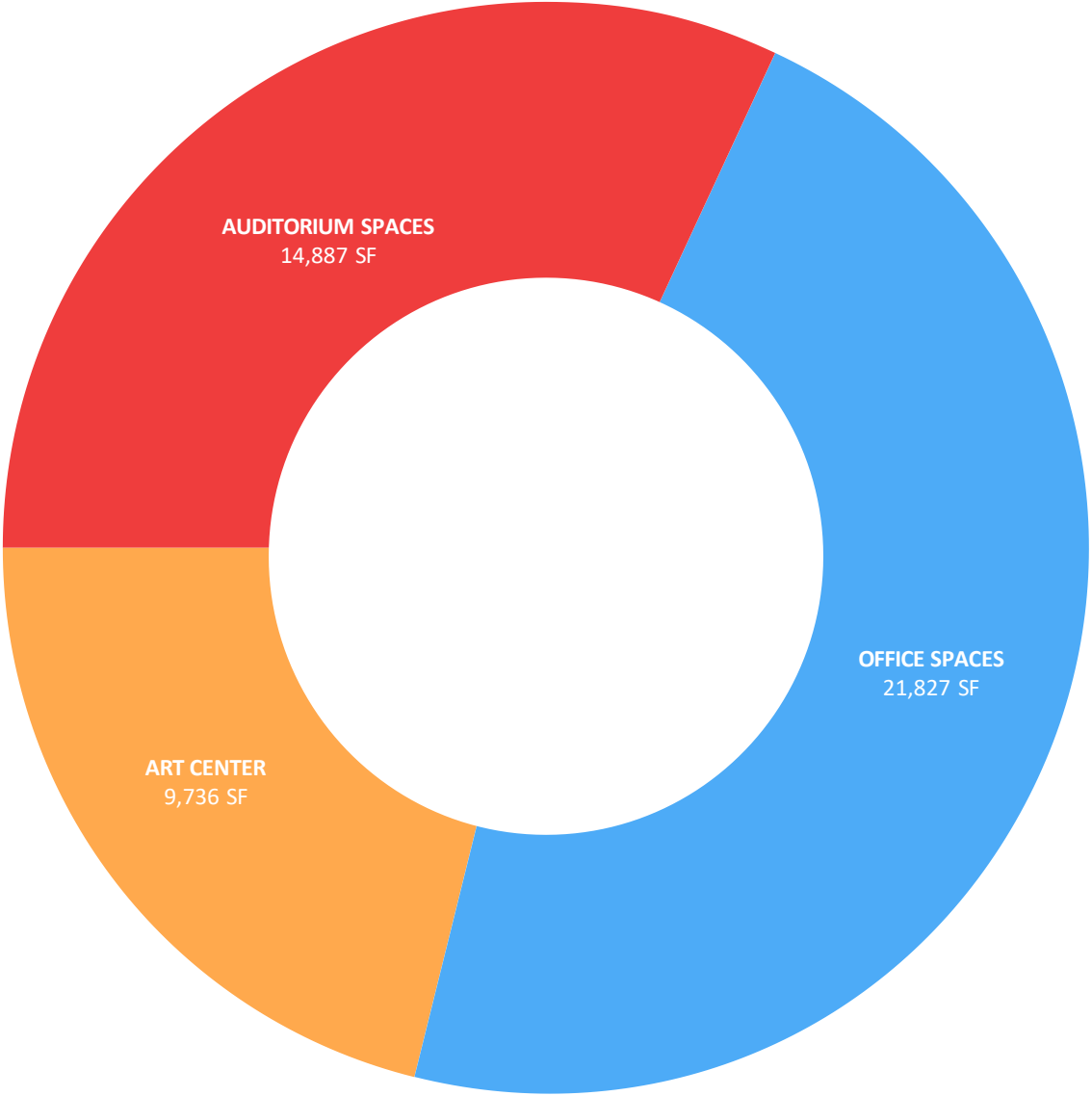
## Project Vision + Pillars

DESIGN UPDATE



# PROGRAM OF SPACES

Totals		gross sqft
Auditorium		14,887
Municipal Office Art		21,827
Center		9,736
Estimated Overall Square Footage		46,449







- A. STAIRS
- B. SLOPED WALK
- C. "ARTS & MUNICIPAL COMPLEX" SIGN
- D. TERRACED RAIN GARDEN
- E. RAIN GARDEN
- F. ART AND GARDEN VIEWING AREA
- G. GREEN WALL AND ART PANELS
- H. BIKE RACKS
- I. OUTDOOR CLASSROOM
- J. CUSTOM CONCRETE 2 TIER SEAT WALL WITH LIMESTONE BLOCKS
- K. OPEN LAWN AND PLAZA SPACE
- L. LOADING DOCK
- M. DROP-OFF
- N. CENTRAL BREEZEWAY
- O. CURBED PLANTERS
- P. "TABLETOP" PEDESTRIAN CROSSING (NOT IN SCOPE)

# Updated Site Plan

⊕ 1"=40'-0"

**DELV**DESIGN

18 APRIL 2022





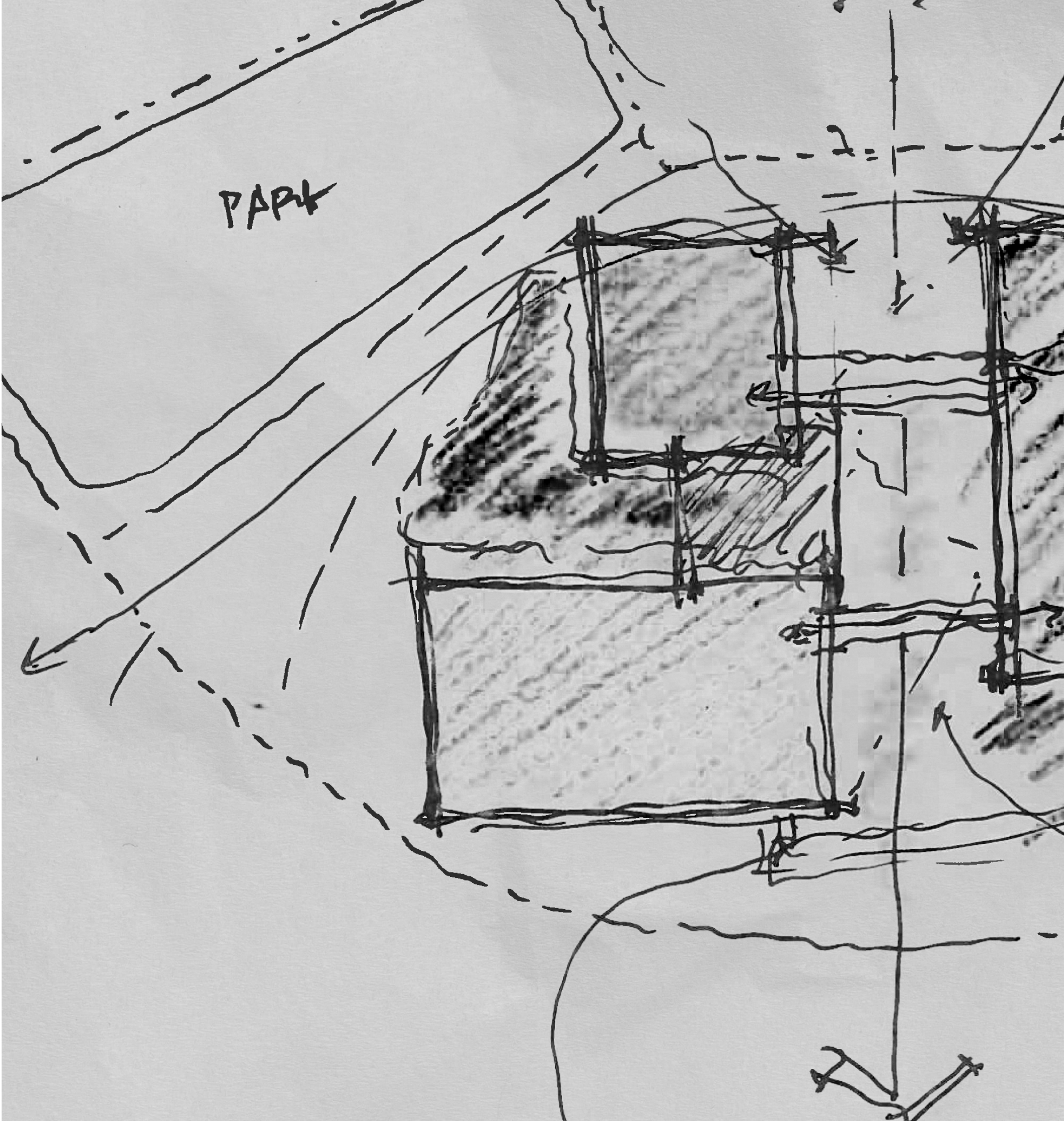
# Updated Level 01 Floor Plan

3/64" = 1'-0"

- ART CENTER
- GALLERY + LOBBY SPACE
- THEATER SPACES
- SERVICE + CIRCULATION + BOH

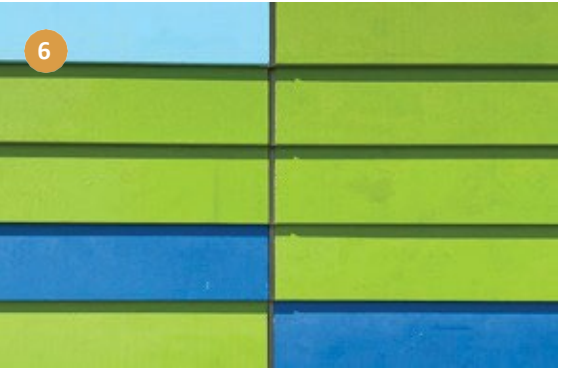
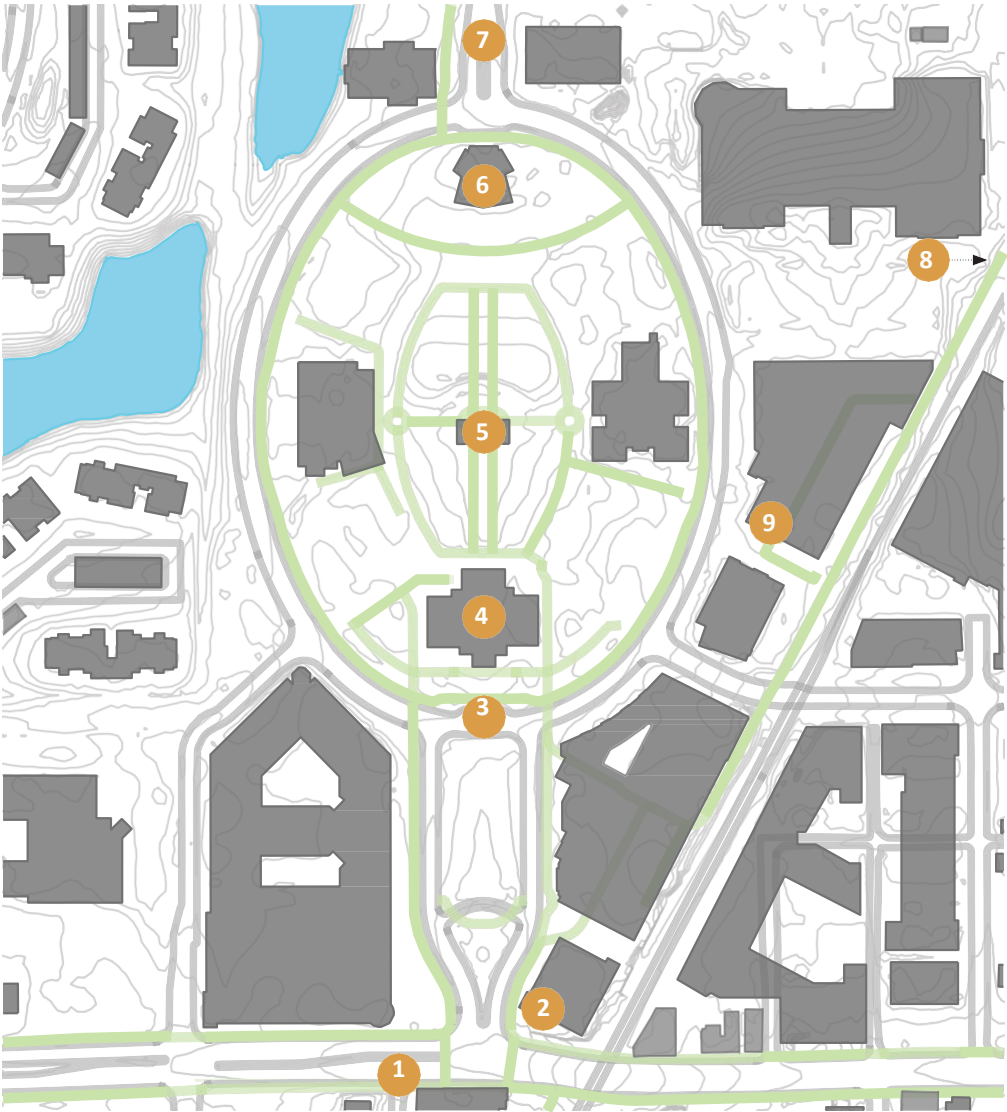


# Building Design



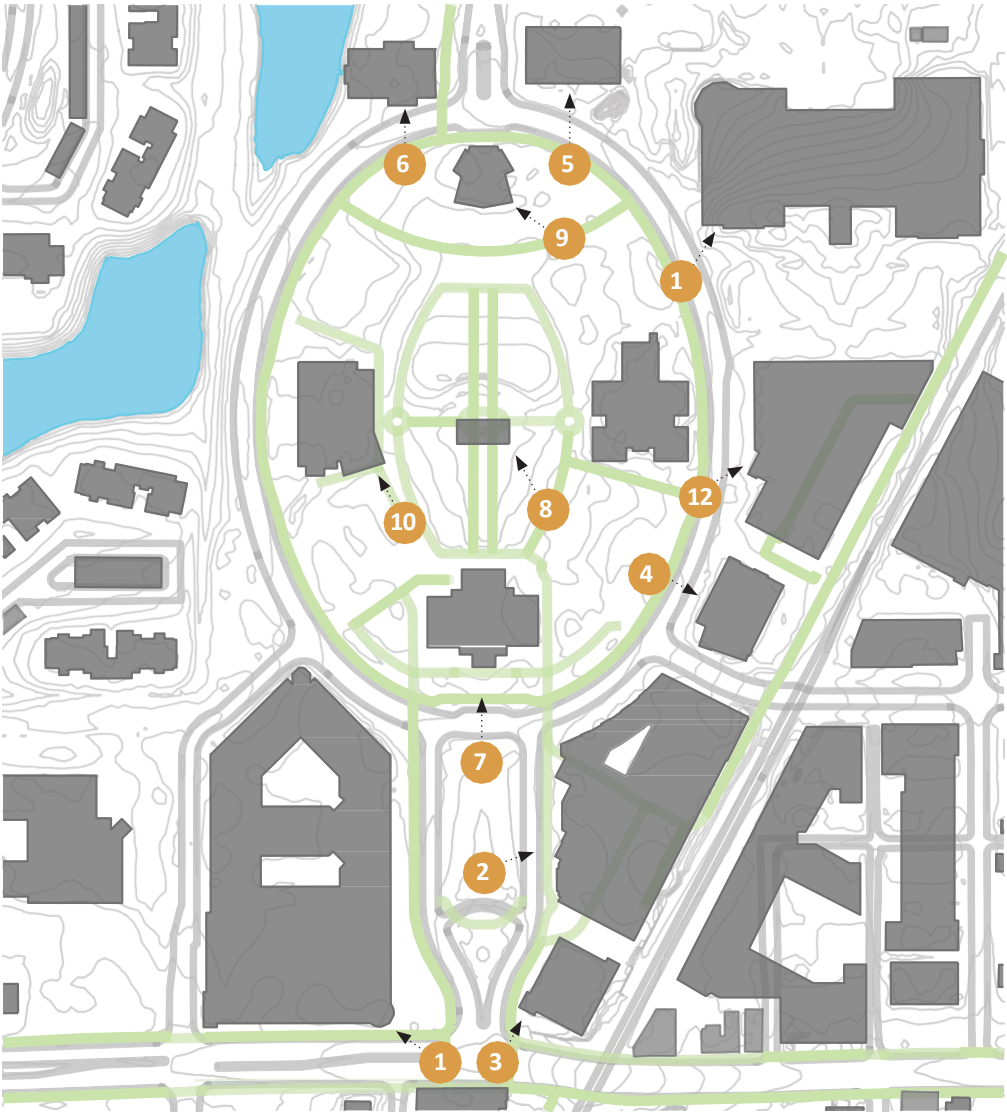


# Cultural and Civic Context



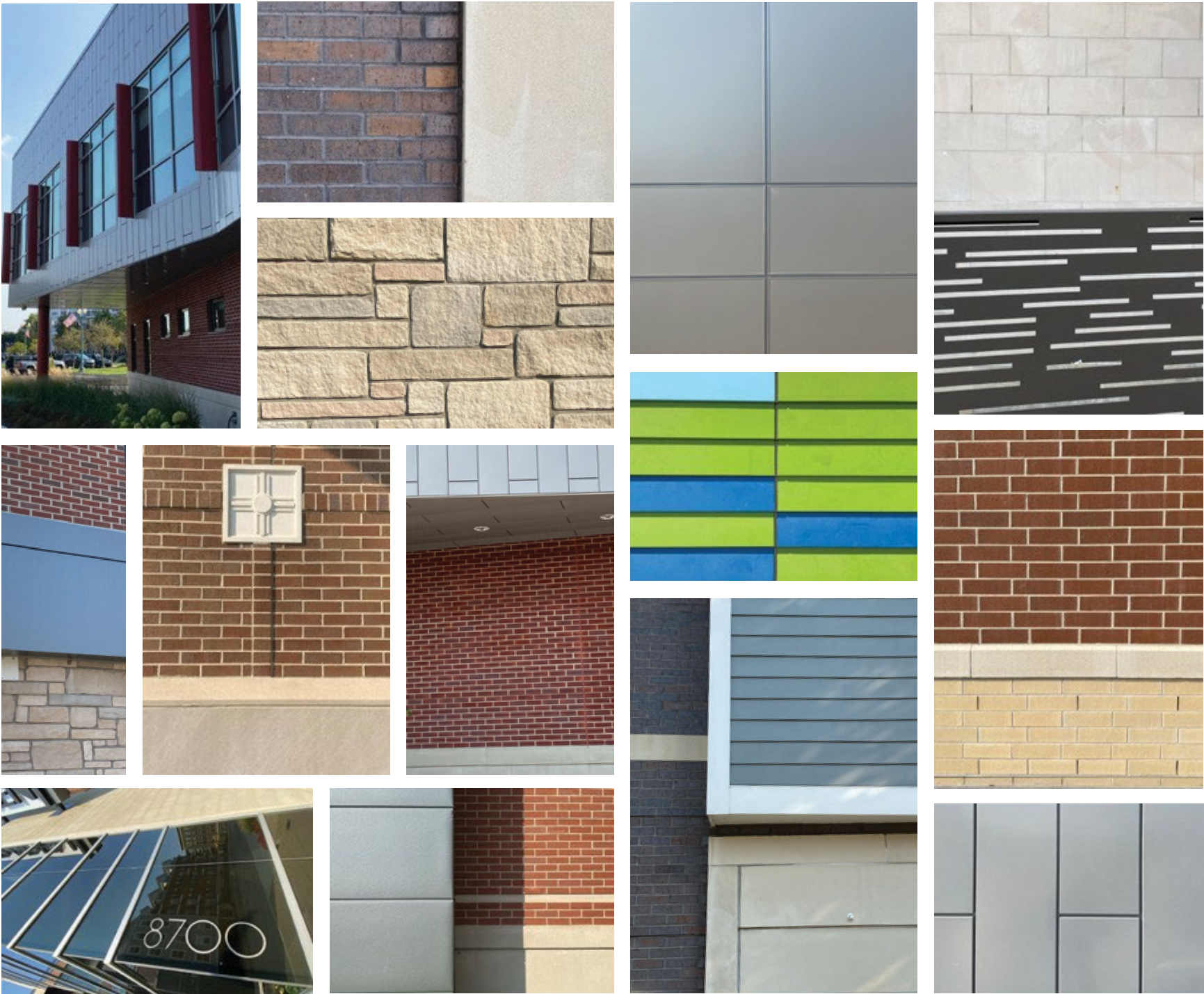


# Architectural Context





# Context Materiality



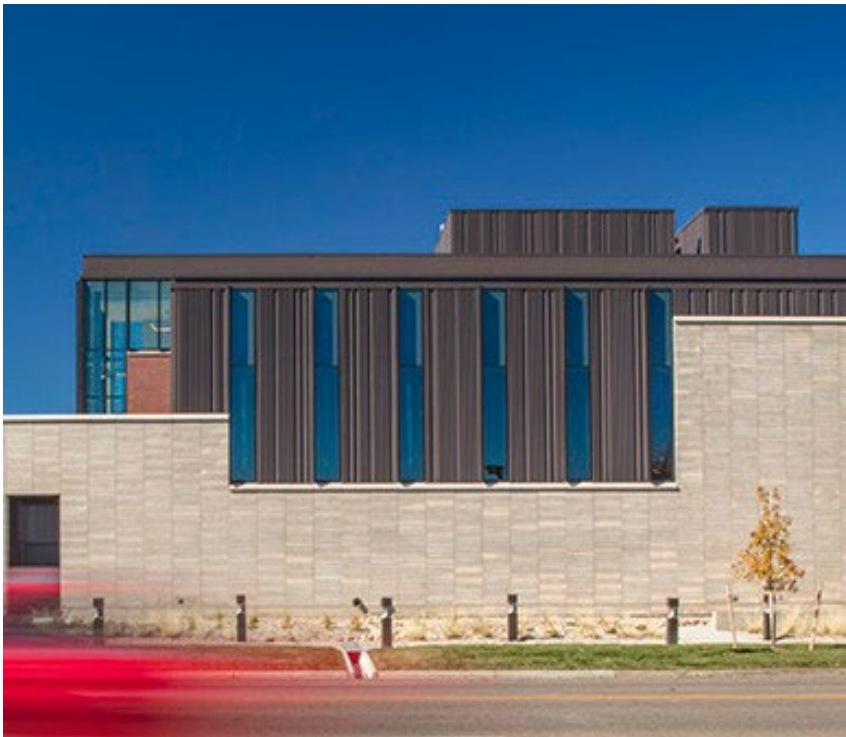


# Character Study





# Character Study







**AERIAL VIEW FROM SOUTHEAST**

- |                        |                                |
|------------------------|--------------------------------|
| 1. LIMESTONE VENEER    | 7. GREENSCREEN WALL TREATMENT  |
| 2. BRICK VENEER        | 8. ART WALL / MURAL            |
| 3. METAL PANEL         | 9. METAL FABRICATED CANOPY     |
| 4. ALUMINUM STOREFRONT | 10. EXTENSIVE GREENROOF        |
| 5. CURTAINWALL GLAZING | 11. OCCUPIABLE ROOF TERRACE    |
| 6. GLASS OVERHEAD DOOR | 12. LIGHT / ART DISPLAY PANELS |





**AERIAL VIEW FROM NORTHEAST**

- |                        |                                |
|------------------------|--------------------------------|
| 1. LIMESTONE VENEER    | 7. GREENSCREEN WALL TREATMENT  |
| 2. BRICK VENEER        | 8. ART WALL / MURAL            |
| 3. METAL PANEL         | 9. METAL FABRICATED CANOPY     |
| 4. ALUMINUM STOREFRONT | 10. EXTENSIVE GREENROOF        |
| 5. CURTAINWALL GLAZING | 11. OCCUPIABLE ROOF TERRACE    |
| 6. GLASS OVERHEAD DOOR | 12. LIGHT / ART DISPLAY PANELS |





**AERIAL VIEW FROM SOUTHWEST**

- |                        |                                |
|------------------------|--------------------------------|
| 1. LIMESTONE VENEER    | 7. GREENSCREEN WALL TREATMENT  |
| 2. BRICK VENEER        | 8. ART WALL / MURAL            |
| 3. METAL PANEL         | 9. METAL FABRICATED CANOPY     |
| 4. ALUMINUM STOREFRONT | 10. EXTENSIVE GREENROOF        |
| 5. CURTAINWALL GLAZING | 11. OCCUPIABLE ROOF TERRACE    |
| 6. GLASS OVERHEAD DOOR | 12. LIGHT / ART DISPLAY PANELS |





VIEW FROM SOUTH





VIEW FROM SOUTH





**VIEW FROM NORTH**