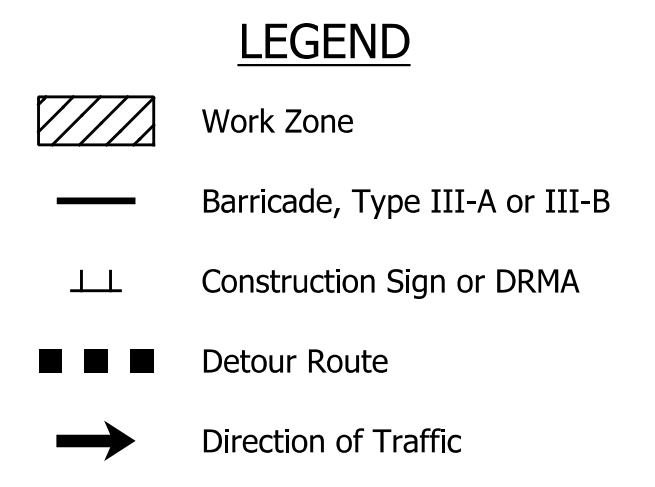


QUANTITY SUMMARY - DETOUR ROUTE		
Detour Route Marker Assembly	48	Each
Construction Sign, Type A	10	Each
Construction Sign, Type B	12	Each
Type A Barricade	120	Lft.
Type B Barricade	72	Lft.
Road Closure Sign Assembly	3	Each

- NOTES:**
- The Contractor shall coordinate all anticipated roadway closures and detours with the City of Fishers and adjacent projects. See Provisions for details.
  - Any construction activities for line "PR-HR" shall be completed off-line from existing roadway surfaces prior to any roadway closures.
  - All existing pedestrian access routes shall be maintained at all times for the duration of construction. Access will not be provided for new pedestrian routes until construction and maintenance of traffic operations are completed.
  - Str. No. 400 and Proposed Detention Basin shall be completed in a phase prior to construction of roadway embankments and subgrade. See General Plan Details.



DATE	REVISION



RECOMMENDED FOR APPROVAL: *[Signature]*  
 DESIGN ENGINEER 12/04/2023 DATE

DESIGNED: HPW DRAWN: MCC  
 CHECKED: JPS CHECKED: JPS

INDIANA  
 DEPARTMENT OF TRANSPORTATION

MAINTENANCE OF TRAFFIC  
 DETOUR ROUTE

HORIZONTAL SCALE	BRIDGE FILE
1" = 60'	N/A
VERTICAL SCALE	DESIGNATION
N/A	1901669
SURVEY BOOK	SHEETS
N/A	11 of 109
CONTRACT	PROJECT
R-42277	1901669