
CITY OF FISHERS
REQUEST FOR QUOTE
INSTRUCTIONS TO QUOTERS

From: City of Fishers
Department of Public Works
10212 Eller Rd.
Fishers, Indiana 46038

Date: Sept 11, 2024

“City of Fishers Parks Entry Signage”

1. GENERAL

1.1 Notice is hereby given that the City of Fishers (“Fishers”) will receive sealed quotes (“Quote”) for the above described "City of Fishers Parks Entry Signage" at the City of Fishers Department of Public Works at 10212 Eller Rd. Fishers, Indiana 46038 until 9am EST on October 3th, 2024. No late Quotes will be accepted.

1.2 SCOPE OF SERVICES

The proposed scope of work shall include the removal of existing park entry signs, installation of concrete pad, mounting brackets, sign fabrication and installation.

Base Bid

Contractor shall execute and install each park sign per specifications listed in Exhibit A
Each park sign location will be found in Exhibit B

Work will start once all materials are received to minimize the absence of a sign at each park.

Contractor shall be responsible for all utility locates needed.

Alternate 1

Removal and disposal of existing signs.

Alternate 2

Concrete shall be a standard broom finish gray concrete set on a crushed stone base of 6".
Top ledge of concrete shall be at a 1-2% slope away from sign to eliminate water from sitting on top of slab.

There shall be no debris left on sight as the owner will install landscaping around each sign at a later date.

1.3 Fishers reserves the right to reject any or all Quotes or to waive any informalities and to accept the Quote that it deems most favorable to Fishers after all Quotes have been examined and reviewed. All Quotes are subject to approval by the Board of Public Works and Safety.

1.4 Quoters shall comply with I.C. 22-5-1.7 and may be required execute an E-Verify Affidavit and to enroll in and verify the work eligibility status of all newly hired employees through the E-Verify Program.

2. EXAMINATION OF SPECIFICATIONS

2.1 Quoters shall carefully and thoroughly examine specifications and shall assume the full risk of their own judgments as to the nature, value, price, quality and quantity of this quote(s), and for the price quote, and assume all risk of any and all variances or errors in any computation or statement of value, price or quantities in strict compliance with the Specifications.

3. QUOTER'S PROPOSAL AND EVALUATION

3.1 By submitting a Quote the Quoter agrees the Quote proposal and price(s) contained therein shall be valid for ninety (90) days from the date of Quote opening.

3.2 Award of the Quote will be made to the Quoter with the lowest, responsive and responsible **Net Quote**. The Owner reserves the right to reject all Quotes and may waive or allow a Quoter to correct errors, omissions or other irregularities in Quote Documents that are found not to have afforded the Quoter a substantial competitive advantage over other Quoters. All Quotes are subject to approval by the Board of Public Works and Safety.

3.3 The Owner shall have the right to reject any Quote if investigation of the Quoter fails to satisfy the Owner that such Quoter is properly qualified to carry out the obligations and provide the Fleet Power Upgrades as Quote. Any or all Quotes will be rejected if there is reason to believe that collusion exists among Quoters.

Base Bid Total = \$_____

Alternate 1 Total = \$_____

Alternate 2 Total = \$_____

Combined Total = \$_____

5. EXCEPTIONS

5.1 The Quoter shall fully state each exception taken to the Instructions to Quoters and Specifications.

5.2 Quoter is cautioned that any exception taken by Quoter and deemed by Owner to be a material qualification or variance from the terms of the Instructions to Quoters or Specifications may result in this Quote being rejected as non-responsive.

5.3 Exceptions:

6. SIGNATURES

Quoter certifies that it has informed itself fully regarding all conditions under which it will be obligated by these Instructions to Quoters, and knows, understands and accepts the existing conditions. Quoter further certifies that it has thoroughly reviewed the Instructions to Quoters, Specifications, including all Addenda, and has had the opportunity to ask questions and obtain interpretations or clarifications concerning the Instructions to Quoters, Specifications, and Addenda.

[Signature by or on behalf of the Quoter in the spaces provided below shall constitute execution of each and every Part of this Itemized Proposal and Declarations document. SIGNATURE MUST BE PROPERLY NOTARIZED.]

Written Signature: _____

Printed Name: _____

Title: _____

Important - Notary Signature and Seal Required in the Space Below

STATE OF _____

SS:

COUNTY OF _____

Subscribed and sworn to before me this _____ day of _____,
20 ____.

My commission expires: _____ (Signed) _____

Residing in _____ County, State of _____



City of Fishers

Fishers Parks Monument Sign

EXHIBIT A

Contact:

Eric Steiner | 317-595-3152 | steinere@fishers.in.us

Jobsite Location:

7200 Pymbroke Way | Fishers, IN 46038

Sales Representative:

JR Knight
317.808.7949
jr@eye4group.com

Project Manager:

Kacie Kirby
317.804.4080 x7953
kacie@eye4group.com

Designer:

Ania Zuniga
317.808.7952
ania@eye4group.com

Sales Order:

9832

Date:

8/28/24

Version

6



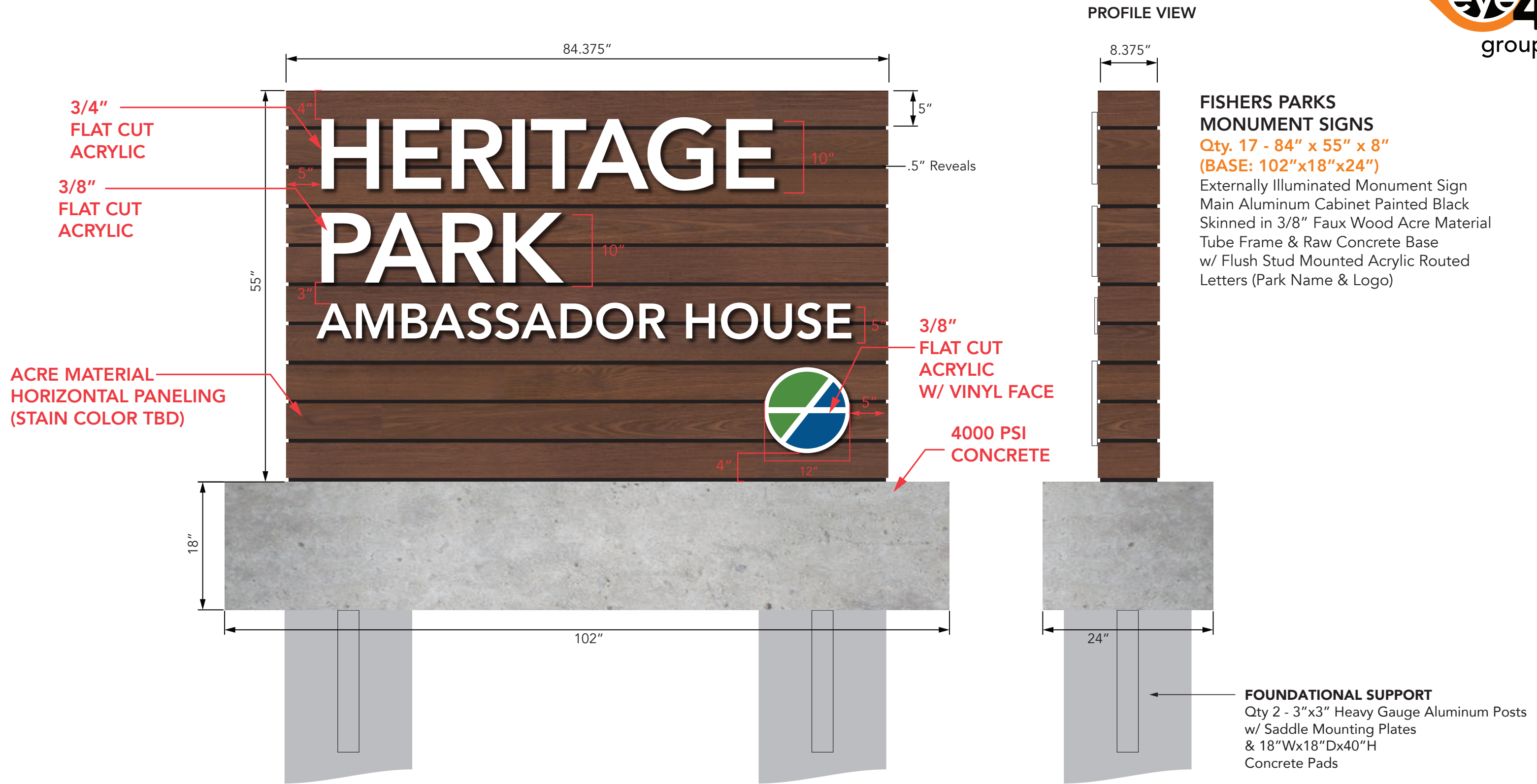
File Path:

©Copyright 2023 Eye 4 Group, LLC.
The illustrations and concepts of signage and related graphic design(s) presented within this packet are the property of Eye 4 Group, LLC. unless other arrangements have been made in advance, in writing.

Colors, Finishes and Materials
The colors that appear within this document are created electronically using the latest in computerized design software. You will be asked to approve the actual paint and vinyl samples prior to the start of fabrication and/or install.

Fabrication per UL/NEC 600
All electrical signage is fabricated per UL/NEC 600 standards. Customer (who is purchasing) is responsible for the electricians fees including parts/labor for hook up of the sign.

Site Survey and Verification
The proposed signage in this packet will most likely require a new sign/site survey prior to fabrication. Production will begin only after the permit is issued/approved by the municipality.



File Path:

©Copyright 2023 Eye 4 Group, LLC.

The illustrations and concepts of signage and related graphic design(s) presented within this packet are the property of Eye 4 Group, LLC. unless other arrangements have been made in advance, in writing.

Colors, Finishes and Materials

The colors that appear within this document are created electronically using the latest in computerized design software. You will be asked to approve the actual paint and vinyl samples prior to the start of fabrication and/or install.

Fabrication per UL/NEC 600

All electrical signage is fabricated per UL/NEC 600 standards. Customer (who is purchasing) is responsible for the electricians fees including parts/labor for hook up of the sign.

Site Survey and Verification

The proposed signage in this packet will most likely require a new sign/site survey prior to fabrication. Production will begin only after the permit is issued/approved by the municipality.

FISHERS PARKS MONUMENT SIGNS CONTINUED

<div>BILLERICAY PARK</div> <div>10" LETTERS</div>	<div>CUMBERLAND PARK</div> <div>8" LETTERS</div>	<div>HARRISON THOMPSON PARK</div> <div>8" LETTERS</div>	<div>MUDSOCK FIELDS</div> <div>10" LETTERS</div>
<div>BROOKS SCHOOL PARK</div> <div>8" LETTERS</div>	<div>CYNTHEANNE PARK</div> <div>8" LETTERS</div>	<div>HERITAGE PARK AMBASSADOR HOUSE</div> <div>10" LETTERS, 5" LETTERS</div>	<div>OLIO FIELDS</div> <div>10" LETTERS</div>
<div>CHEENEY CREEK PARK NORTH TRAILHEAD</div> <div>8" LETTERS, 5" LETTERS</div>	<div>FLAT FORK CREEK PARK</div> <div>10" LETTERS</div>	<div>ROY G. HOLLAND MEMORIAL PARK</div> <div>10" LETTERS, 5" LETTERS</div>	<div>RITCHEY WOODS NATURE PRESERVE</div> <div>10" LETTERS, 5" LETTERS</div>
<div>CHEENEY CREEK PARK SOUTH TRAILHEAD</div> <div>8" LETTERS, 5" LETTERS</div>	<div>HAMILTON PROPER PARK</div> <div>8" LETTERS</div>	<div>HOOSIER WOODS</div> <div>10" LETTERS</div>	<div>GEIST GREENWAY</div> <div>10" LETTERS</div>

QTY. 2

File Path:

©Copyright 2023 Eye 4 Group, LLC.
The illustrations and concepts of signage and related graphic design(s) presented within this packet are the property of Eye 4 Group, LLC. unless other arrangements have been made in advance, in writing.

Colors, Finishes and Materials
The colors that appear within this document are created electronically using the latest in computerized design software. You will be asked to approve the actual paint and vinyl samples prior to the start of fabrication and/or install.

Fabrication per UL/NEC 600
All electrical signage is fabricated per UL/NEC 600 standards. Customer (who is purchasing) is responsible for the electricians fees including parts/labor for hook up of the sign.

Site Survey and Verification
The proposed signage in this packet will most likely require a new sign/site survey prior to fabrication. Production will begin only after the permit is issued/approved by the municipality.

EXHIBIT B

Heritage Park - 10598 Eller Rd, Fishers, IN 46038

- Remove old sign and install new concrete slab and sign in same location as old.



Ritchey Woods Nature Preserve - 10410 Hague Rd, Fishers, IN 46038

- Remove old sign and install new concrete slab and sign in same location as old.



Cheeeney Creek Natural Area - 11030 Fishers Pointe Blvd, Fishers, IN 46038

- Remove old sign and install new concrete slab and sign in same location as old.



Roy G. Holland Memorial Park - 1 Park Dr, Fishers, IN 46038

- Remove old sign and install new concrete slab and sign in same location as old.



Harrison Thompson Park - 13573 Conner Knoll Pkwy, Fishers, IN 46038

- Remove old sign and install new concrete slab and sign in same location as old.



Cumberland Park - 10580 Cumberland Rd, Fishers, IN 46037



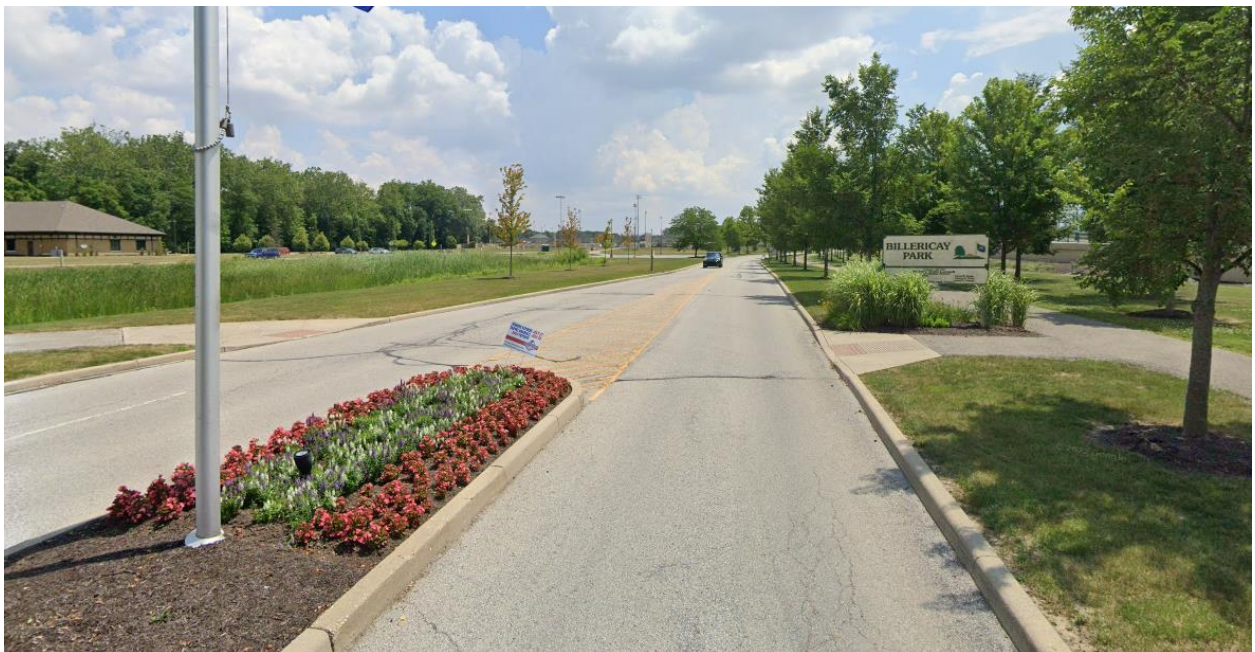
Hamilton Proper Park – 10525 Hoosier Rd, Fishers, IN 46037

- Remove old sign and install new concrete slab and sign in same location as old.



Billericay Park - 12690 Promise Rd, Fishers, IN 46038

- Remove old sign and install new concrete slab and sign in same location as old.



Mudsock Fields - 12160 Packers Ave, Fishers, IN 46037

- Remove old sign and install new concrete slab and sign in same location as old.



Olio Fields – 14181 126th St, Fishers, IN 46037

- Remove old sign and install new concrete slab and sign in same location as old.



Brooks School Park - 11780 Brooks School Rd. Fishers, IN 46038

- Remove old sign and install new in different location (see image)



Brooks School Park Sign along 116th Street remove entirely.



An aerial photograph of a road intersection. A vertical road on the right is labeled 'Brooks School Rd' in white text. A horizontal road at the bottom is labeled 'SANDSTONE' in white text, with a smaller label below it: '19-11-34-00-10-002.000' and '0 Brooks School Rd'. On the left, a road is labeled 'BROOKS' in white text, with a smaller label below it: '11-34-00-00-013.002' and '0 Hamble Blvd'. A green arrow points to a location on the right side of the intersection, labeled 'New Sign Location'. A red arrow points to a location on the left side of the intersection, labeled 'Old Sign'. The intersection features a roundabout with a red car and a white car. There are also some blue markings on the road surface.



Cyntheanne Park - 12383 Cyntheanne Rd, Fishers, IN 46037

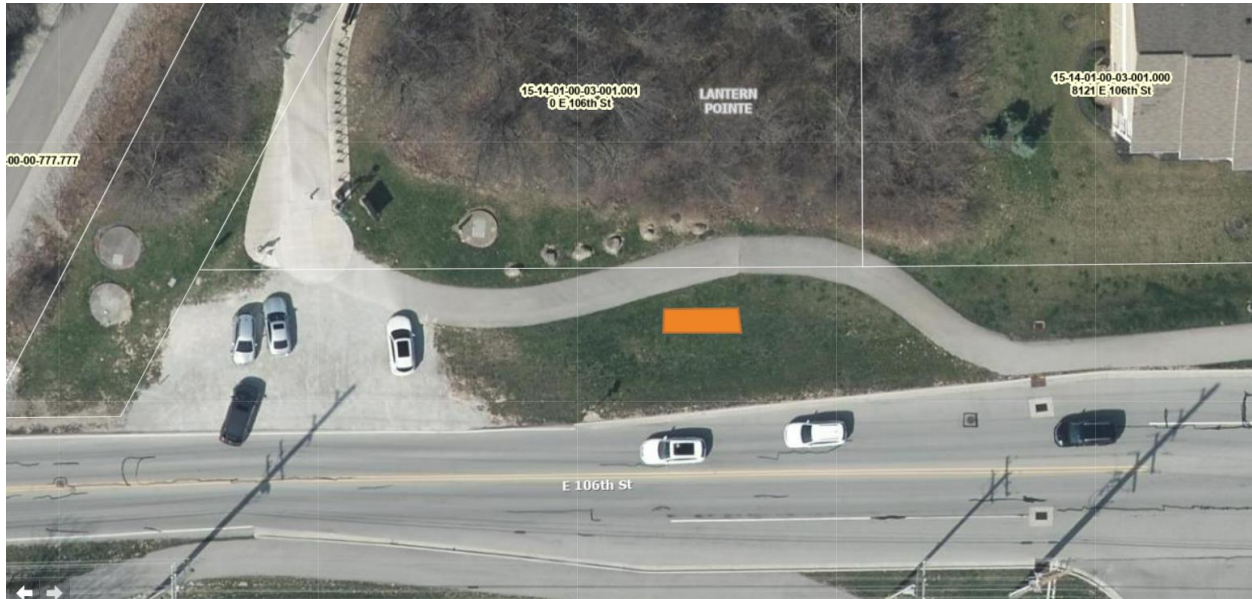


Cyntheanne Park New Sign Location



New Site Sign Installation

Cheaney Creek South Trailhead



Geist Greenway – 2 signs – one facing west bound traffic and one facing eastbound traffic on north side of 126th as close to the walking trail as possible.

